

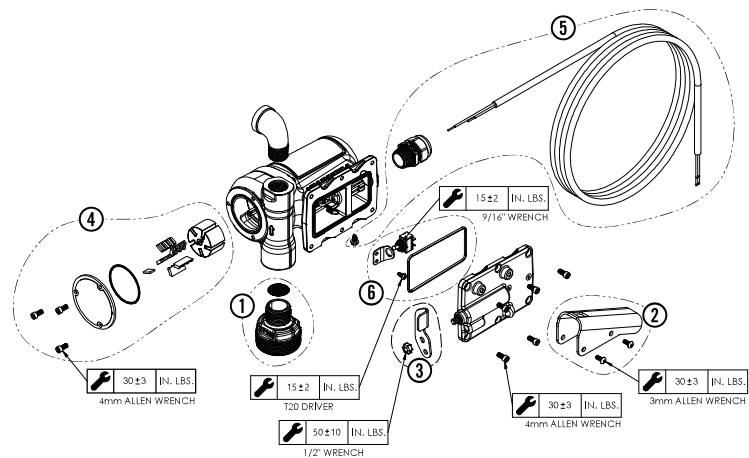
Pump Repair and Rebuild Kits


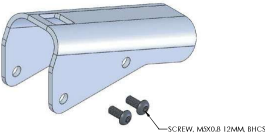
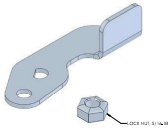



For repairs or routine maintenance, Fill-Rite offers the parts you need. The following parts diagram and list covers all applicable parts for your Fill-Rite product. These parts can be obtained through any authorized Fill-Rite dealer. Be sure to use only genuine Fill-Rite replacement parts for your service and maintenance needs. For a list of authorized dealers, please visit fillrite.com.



WARNING

DO NOT open or attempt to repair the motor on your FR8 series pump. Opening the motor case can compromise the integrity of the Explosion Proof construction and will void any existing warranty and certification (UL listing). **Please refer to the Warranty Policy located on page 2.**



<p>1. KITFR8BG - Inlet Bung Kit</p>  <p>Inlet Bung and Inlet Screen</p>	<p>2. KITFR8NB - Nozzle Boot Kit</p>  <p>Nozzle Boot, (2) Button Head Screws</p>	<p>3. KITFR8SW - FR8 Switch Lever</p>  <p>Switch Lever Mounting Bolt</p>
<p>4. KITFR8RG - FR8 Rotor Kit</p>  <p>Rotor, (5) Vanes, Key, Rotor Cover, Rotor Cover Seal, (3) Bolts</p>	<p>5. KITFR8PC - FR8 Power Cable Kit</p>  <p>15' Power Cord, Cable Gland, Ground Screw, Electrical Connectors</p>	<p>6. KITFR8ES - FR8 Internal Switch Kit</p>  <p>Internal Switch w/ Mounting Bracket and Screw, Switch Plate Gasket, (6) Bolts</p>